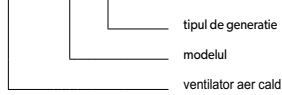


VENTILATOR DE AER BANAN - GEN II



BANAN x - II

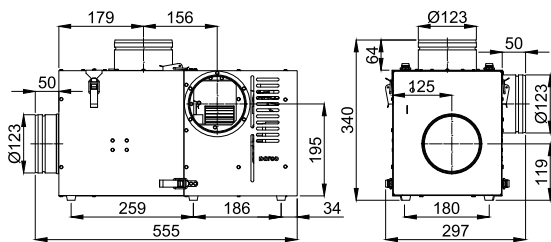


Scopul ventilatorului	W	W - ventilatie de admisie - evacuare
	O	O - aer cald
Material	OC	OC - tabla zincata

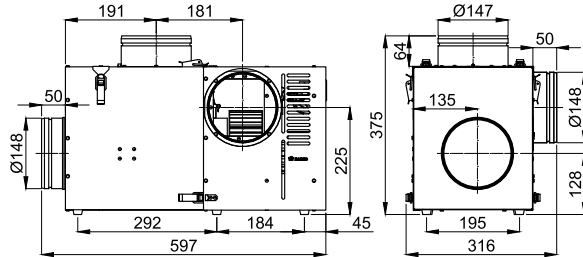
Parametri tehnici	BANAN1-II	BANAN2-II	BANAN3-II
Diametru racord aer [mm]	ø 125	ø 150	ø 150
Capacitate maxima [m ³ /h]	370	570	660
Presiune maxima [Pa]	140	170	195
Putere nominala [W]	50	80	90
Tensiune de alimentare [V/Hz]	230/50		
Temperatura max. aer transportat [°C]	180		
Temperatura max. mediu inconjurator [°C]	40		
Clasa de protectie IP	IP20		

Ventilatoare de aer - versiuni / dimensiuni

BANAN1-II



BANAN2-II



BANAN3-II

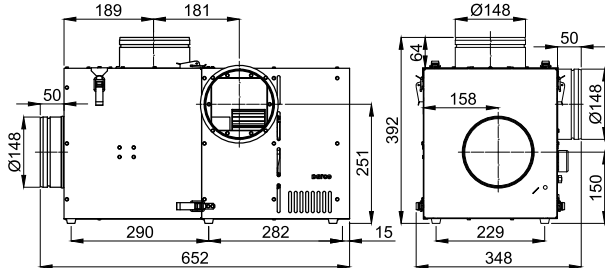
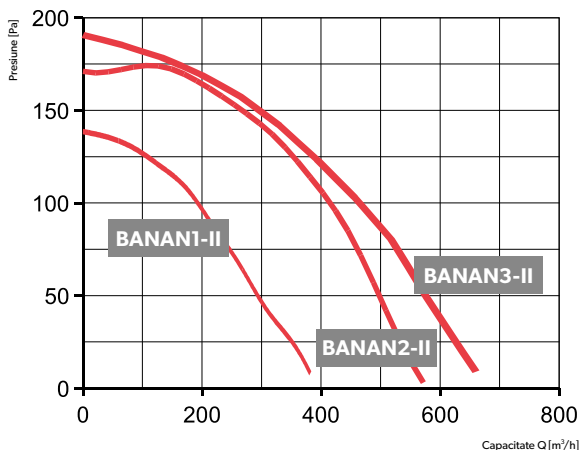


Diagrama flux aer

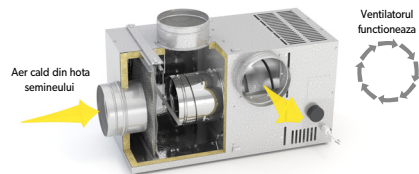


Principiul de functionare

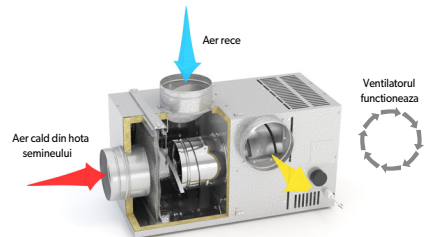
I. Temperatura din hota semineului este sub cea setata pe termostat (recomandat peste 40°C).



II. Temperatura din hota semineului este peste 40°C pana la 70°C.



III. Supraincalzirea aerului din hota (intre 70°C si 180°C).



IV. Ventilatorul nu functioneaza (spre exemplu defectiune sau pana de curent).

