

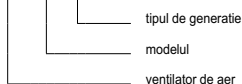
VENTILATOR DE AER - GEN II



Scopul ventilatorului	W	W - ventilatie de admisie - evacuare
	O	O - aer cald
Material	OC	OC - tabla zincata

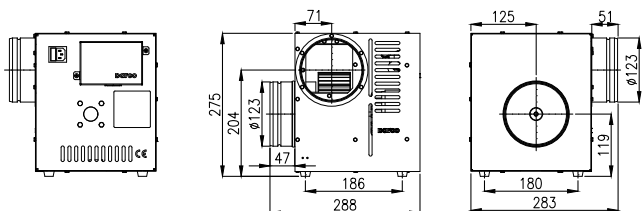
Parametri tehnici	AN1-II	AN2-II	AN3-II
Capacitate maxima [m³/h]	490	860	990
Presiune maxima [Pa]	150	220	210
Temperatura max. aer transportat [°C]		150	
Zgomot [dB]		65	
Tensiune de alimentare [V/Hz]		230/50	
Putere nominala [W]	50	95	120
Curent maxim [A]	0.4	0.7	1.1
Siguranta priza de alimentare		2A	
Siguranta B1		100mA (SCHUSTER 0034.6004)	
Temperatura max. mediu inconjurator [°C]		40	
Clasa de protectie IP		IP20	
Greutate [kg]	5.50	6.70	8.30

AN x - II

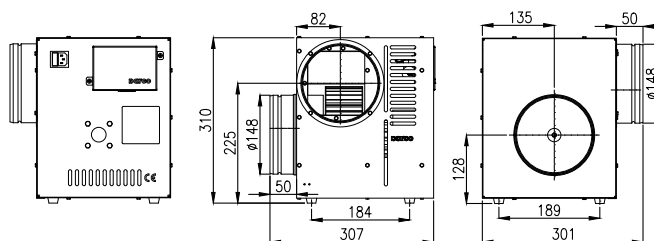


Ventilatoare de aer - versiuni / dimensiuni

Ventilator de aer AN1 - GEN II



Ventilator de aer AN2 - GEN II



Ventilator de aer AN3 - GEN II

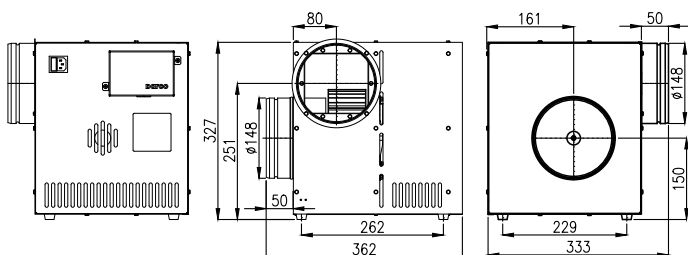
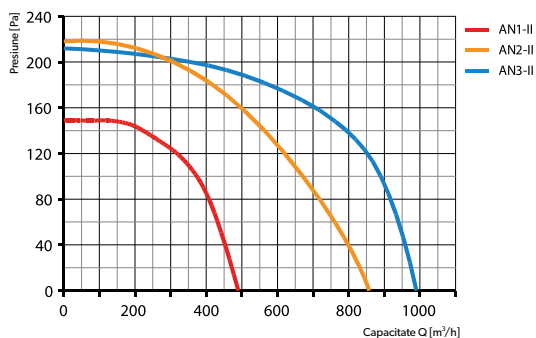
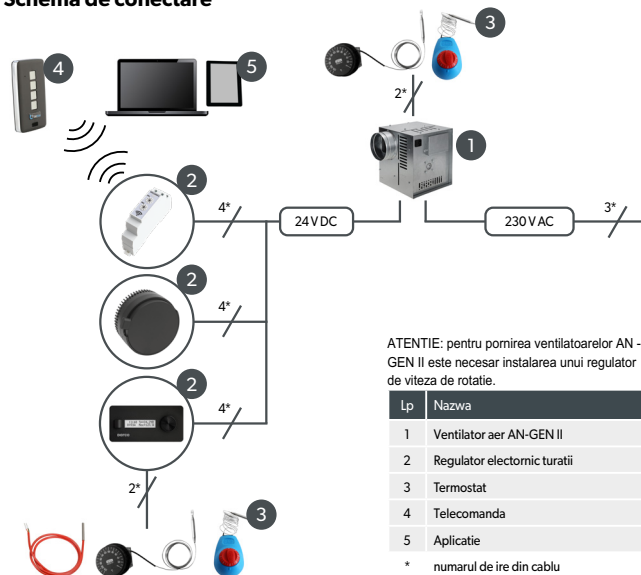


Diagrama flux aer



Schema de conectare



ATENȚIE: pentru pornirea ventilatoarelor AN-GEN II este necesar instalarea unui regulator de viteză de rotație.

Lp	Nazwa
1	Ventilator aer AN-GEN II
2	Regulator electronic turatii
3	Termostat
4	Telecomanda
5	Aplicatie

* numarul de ire din cablu